



# **NISHA SALES**

Wholesaler House of Industrial Requisites

---

**Pneumatic Catalog**

## Item Wise HSN Code

Product Name	HSN Number	GST%
PU Fittings, Cylinder, Cylinder Accessories, Silencers, Air Gun	8487	18%
PU Tube	3917	18%
Air Preparation Accessories	8481	18%

## Conversion Table

Units Of Flow				
To Obtain Units x Factor	GPM	L/MIN	CFM	M <sup>3</sup> /MIN
GPM (Gallons Per Minute – USA Gals)	1.0	3.785	0.1337	3.785 x 10 <sup>3</sup>
L / Min (Litres Per Minute)	15.84	60	2.10	60 x 10 <sup>3</sup>
Cfm (Cubic Meter Per Minute)	7.481	28.32	1.0	28.32 x 10 <sup>3</sup>
M <sup>3</sup> / Min	264.2	1000	35.31	1.0

Units Of Pressure				
To Obtains Units x Factor	Kg / Cm2	PSI	MM Hg	Bar
1 atm	1.033	14.70	760	1.013
1 Kg/cm	1	14.22	735.6	0.9807
1 PSI	0.07031	1	51.71	0.06895
1 Bar	1.020	14.50	750.1	1

## Thread Codes for Ordering

Thread Size	Code
1/8	01
1/4	02
3/8	03
1/2	04

# Pneumatic One Touch Fittings

**Male Straight  
SPC**



**Tube - Thread**

04-M5	06-02	10-01	12-04
04-M6	06-03	10-02	14-02
04-01	06-04	10-03	14-03
04-02	08-01	10-04	14-04
06-M5	08-02	12-01	16-02
06-M6	08-03	12-02	16-03
06-01	08-04	12-03	16-04

**Male Elbow  
SPL**



**Tube - Thread**

04-M5	06-02	10-01	12-04
04-M6	06-03	10-02	14-02
04-01	06-04	10-03	14-03
04-02	08-01	10-04	14-04
06-M5	08-02	12-01	16-02
06-M6	08-03	12-02	16-03
06-01	08-04	12-03	16-04

**Branch Tee  
SPB**



**Tube - Thread**

04-M5	06-02	10-01	12-04
04-M6	06-03	10-02	16-02
04-01	06-04	10-03	16-03
04-02	08-01	10-04	16-04
06-M5	08-02	12-01	-
06-M6	08-03	12-02	-
06-01	08-04	12-03	-

**Female Straight  
SPCF**



**Tube - Thread**

04-01	08-02	12-02
04-02	08-03	12-03
06-01	08-04	12-04
06-02	10-01	16-03
06-03	10-02	16-04
06-04	10-03	-
08-01	10-04	-

**Male Y Connector  
SPX**



**Tube - Thread**

06-01	08-02	10-03	12-04
06-02	08-03	10-04	16-02
06-03	08-04	12-01	16-03
06-04	10-01	12-02	16-04
08-01	10-02	12-03	-

**Flow Control Elbow  
JSC**



**Tube - Thread**

04-M5	06-02	10-01
04-M6	06-03	10-02
04-01	06-04	10-03
04-02	08-01	10-04
06-M5	08-02	12-02
06-M6	08-03	12-03
06-01	08-04	12-04

**Male Banjo Elbow  
SPH**



**Tube - Thread**

04-M5	06-03	08-04	12-02
04-01	06-04	10-02	12-03
06-M6	08-01	10-03	12-04
06-01	08-02	10-04	16-03
06-02	08-03	12-01	16-04

**Female Banjo Elbow  
SPHF**



**Tube - Thread**

04-01	08-03
04-02	10-02
06-01	10-03
06-02	12-03
08-01	12-04

**Female Elbow  
SPLF**



**Tube - Thread**

04-01	06-02	10-03
04-02	08-02	12-03
06-01	10-02	12-04

**Male Triple Branch  
SPKB**



**Tube - Thread**

06-01	08-01	08-03
06-02	08-02	-

**Run Tee  
SPD**



Tube - Thread			
04-01	08-01	10-02	12-02
04-02	08-02	10-03	12-03
06-01	08-03	10-04	12-04
06-02	-	-	-

**Extended Male Elbow  
SPLL**



Tube - Thread		
04-01	08-02	10-03
04-02	08-03	12-03
08-01	10-02	12-04

**Equal Union  
SPU**



Tube OD			
04	08	12	16
06	10	14	-

**Equal Elbow  
SPV**



Tube OD			
04	08	12	16
06	10	14	-

**Equal Y  
SPY**



Tube OD			
04	08	12	16
06	10	14	-

**Equal Cross  
SPXL**



Tube OD			
04	08	12	16
06	10	14	-

**Bulkhead  
SPM**



Tube OD			
04	08	12	16
06	10	14	-

**Equal Tee  
SPE**



Tube OD			
04	08	12	16
06	10	14	-

**Triple Branch  
SPK**



Tube OD			
04	08	12	16
06	10	14	-

**Blanking Plug  
SPP**



Tube OD			
04	08	12	16
06	10	14	-

**In Line Flow Control  
SNSF**



Tube OD			
04	08	12	16
06	10	14	-

**In Line Flow Valve  
SHVV**



Tube OD			
04	08	12	16
06	10	14	-

**Unequal Union Straight  
SPG**



Tube OD	
06-04	10-08
08-04	12-08
08-06	12-10
10-06	16-12

**Unequal Y Connector  
SPM**



Tube OD	
04-04-06	08-08-10
04-04-08	08-08-12
06-06-08	10-10-12
06-06-10	-

Unequal Triple Branch  
SPKG



Tube OD
06-06 04-04-04
08-08 04-04-04
08-08 06-06-06
10-10 06-06-06
10-10 08-08-08

Inline Hand Valve Male Thread  
SHVSS



Thread
01-01 (1/8 x 1/8)
02-01 (1/4 x 1/8)
02-02 (1/4 x 1/4)
02-03 (1/4 x 3/8)
03-03 (3/8 x 3/8)
04-03 (1/2 x 3/8)

Unequal Union Tee  
SPN



Tube OD	
04-04-06	08-08-12
06-06-04	10-10-08
06-06-08	10-10-12
08-08-04	12-12-08
08-08-06	12-12-10
08-08-10	-

## Pneumatic Tube

PU Tube

Blue, Green, Yellow, Red, Transparent, Black, Orange, White



OD x ID			
4 x 2.5	6 x 4	10 x 7	14 x 9
4.3 x 2.9	8 x 5	10 x 8	14 x 9.5
4 x 2	8 x 5.5	11 x 8	14 x 10
5 x 3	8.3 x 5.9	12 x 8	16 x 11
6.35 x 4.35	8 x 6	12 x 9	16 x 12
6 x 3	10 x 6.5	12 x 10	-

## Pneumatic PU Coil Tube



OD x ID		
6 x 4	10 x 6.5	12 x 8
8 x 5	10 x 7	14 x 10
8 x 5.5	10 x 7.5	16 x 12
8 x 6	10 x 8	-

### Coil Tube Lengths

3mtr	5mtr	6mtr	10mtr	15mtr
------	------	------	-------	-------

# Hose Reals

Hose Reel



Water Hose Reel



Steam Hose Reel



Food Grade



Oil Dispensing



Pressure Washing



# Pneumatic Silencer

Full Bronze Silencer  
DSL



Bronze Silencer Brass Body  
BSLD



Full Brass Silencer Flow Control  
BESL



Mini Silencer Steel Body  
BSLM



Thread (Code)

1/8 (01)

1/4 (02)

3/8 (03)

1/2 (04)

Bronze Silencer Steel Body  
BSL



Thread (Code)

1/8 (01)

1/4 (02)

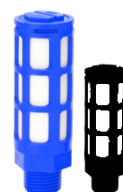
3/8 (03)

1/2 (04)

3/4 (06)

1 (10)

Plastic Silencer  
SPSU



Thread (Code)

1/8 (01)

1/4 (02) (Small - Black)

1/4 (02) (Big - Blue)

3/8 (03)

1/2 (04)

# Quick Release Couplings

Socket Male  
QSM



Socket PU  
QSPU



Plug Male  
QPM



Plug Hose End  
QPH



Socket Female  
QSF



Socket Hose End  
QSH



Plug Female  
QPF



Plug PU  
QPPU



Thread (Code)		
1/8 (01)	1/4 (02)	3/8 (03)

# Heavy Duty QRC - Ludecke (Germany)

Socket Male



Socket Female



Socket Hose End



Plug Male



Plug Female



Plug Hose End



Thread (Code)			
1/8 (01)	1/4 (02)	3/8 (03)	1/2 (04)

# Air Preparation Accessories

## Filter + Regulator



### Thread Size

1/4 (W/O Guard)  
1/4  
3/8  
1/2  
3/4  
1

## Filter



### Thread Size

1/4 (W/O Guard)  
1/4  
3/8  
1/2  
3/4

## Regulator



### Thread Size

1/4  
3/8  
1/2  
3/4  
1

## Lubricator



### Thread Size

1/4 (W/O Guard)  
1/4  
3/8  
1/2

## FRL



### Thread Size

1/4 (W/O Guard)	1/2
1/4	3/4
3/8	1

## FRL – Q Series



### Thread Size

1/2	1-1/2
1	2

## High Pressure Regulator



### Thread Size

1/2  
1

## High Pressure Filter



### Thread Size

1/2  
1



# Pneumatic Valves

## Brass / SS Diaphragm Valve



Normally Closed

Size (BSP)	
1/4	1-1/2
3/8	2
1/2	2-1/2
3/4	3
1	4
1-1/4	-

## Brass / SS Diaphragm Valve



Normally Open

Size (BSP)	
1/4	1
3/8	1-1/4
1/2	1-1/2
3/4	2

## High Pressure Diaphragm Valve



Size (BSP)	
1/2	(Up to 40kg)
3/4	(Up to 35kg)
1	(Up to 35kg)

## Diaphragm Valve for Vacuum



Size (BSP)	
1/2	(Up to 40kg)
3/4	(Up to 35kg)
1	(Up to 35kg)

## Dust Collecting Valve



Size (BSP)	
1	3
1-1/2	2 (Direct)
2	2 x 1/2 (Direct)
2-1/2	3 (Direct)

## Servo Operated For Steam



Brass / SS

Size (BSP)	
1/4	
3/8	
1/2	
3/4	
1	

## Flanged / Screwed Y Type Valve



Single Acting, NC

Size (BSP)	
1/2	1-1/4
3/4	1-1/2
1	2

## Direct Acting Brass (16kg)



Size (BSP)	
1/2	1-1/4
3/4	1-1/2
1	2

## Pneumatic 3 Way Valve



Single Acting

Size (BSP)	
1/2	1-1/4
3/4	1-1/2
1	2

## Brass Pilot Operated Valve



Single Acting

Size (BSP)	
1/2	1-1/4
3/4	1-1/2
1	2

## Solenoid for Steam



### Size (BSP)

1/4 Brass Without Knob

1/4 with Knob (Laundry Valve)

1/4 with Knob 25kg Pressure

## Auto Drain



### Description + Size (BSP)

1/2" CS720 9mm + Timer

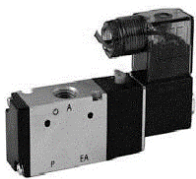
1/2" CS720 + Timer

1/2" Brass Auto Drain + Timer + Strainer

1/2" SS Auto Drain + Timer + Strainer

## Solenoid Valves

### 3/2 Single



### Size (BSP)

1/8      3/8

1/8  
(1/4 body)      1/2

1/4      -

### 5/2 Single



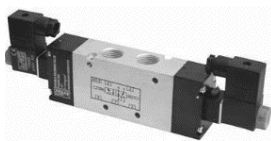
### Size (BSP)

M5      1/4

1/8      3/8

1/8  
(1/4 body)      1/2

### 5/2 Double



### Size (BSP)

1/8      3/8

1/8  
(1/4 body)      1/2

1/4      -

### 5/3 Double



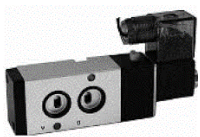
5 Way / 3 Positions

### Size (BSP)

1/8      3/8

1/4      1/2

### 5/2 Single Namur



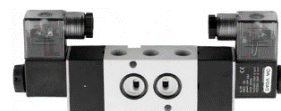
### Size (BSP)

1/4

3/8

1/2

### 5/2 Double Namur



### Size (BSP)

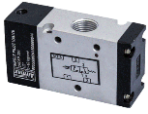
1/4

3/8

1/2

# Pilot Valve

## 3/2 Single



Size (BSP)	
1/8	3/8
1/4	1/2

## 5/2 Single



Size (BSP)	
1/8	3/8
1/4	1/2

## 5/2 Double



Size (BSP)	
1/8	3/8
1/4	1/2

## 5/3 Double



Size (BSP)	
1/4	1/2
3/8	-

## Manifolds for Solenoid Valve



Holes			
2	4	6	10
3	5	8	-
Size (BSP)			
1/8	1/4	3/8	1/2

# Other Valves

## 3/2 Mushroom Push Button



## 3/2 Selector Knob Valve



## 3/2 Ejector Valve



## 3/2 Roller Lever



## 3/2 Passive Roller Lever



## 3/2 Knob



### Size (BSP)

M5

1/8

1/4

## 3/2 Hand Draw Valve



## 5/2 Hand Draw Valve



## Vacuum Generator



## Check Valve NRV Brass



## Shuttle Valve



## Flow Control Valve



### Size (BSP)

1/8

1/4

3/8

1/2

### Hand Slide Valve (FxF)



### Hand Slide Valve (MxF)



### 4/3 Disk Rotary Valve



#### Size (BSP)

1/4

3/8

1/2

### Precision Flow Control Valve



#### Size (BSP)

1/8

1/2

1/4

3/4

3/8

1

### Quick Exhaust Valve



#### Size (BSP)

1/4 (Festo Type)

3/8 (Festo Type)

1/2 (Festo Type)

-

1/8

1/2

1/4

3/4

3/8

1

### Foot Pedal Valve



#### Size (BSP)

5/2 X 1/4 Festo Type

5/2 X 1/4 With Lock

3/2 X 1/4

5/2 X 1/4

5/2 x 1/4 Pneumax Type

### Hand Lever Valve



#### Size (BSP)

5/2 X 1/4 Without Nut

5/2 X 1/4 Spring Return

5/2 X 3/8 Without Nut

5/2 X 1/2 Without Nut

5/3 x 1/4 Spring Centered

## Coils For Valves

#### MINI Coil



#### MIDI Coil



#### Big Coil



#### DIN Coil



#### 8MM Coil



#### 9MM Coil



#### 10MM Coil



#### LED Connector



#### Voltage

220AC

110AC

24DC

24AC

12DC

# Pneumatic Cylinders

**SC Series**  
Non Magnetic, Double Acting



**SU Series**  
Magnetic, Double Acting



**MAL Series**  
Aluminium, Non Magnetic, DA



**DNC Series**  
PU Seals, Magnetic, DA, ISO15552



**SDA Series**  
Non Magnetic, Double Acting



**MS Series**  
Magnetic, Stainless Steel, DA



**CDJ 2B Series**  
Magnetic, SS, DA



**ADVU Series**  
Non Magnetic, Double Acting



**DSNU Series**  
Magnetic, SS, ISO5432



**TN Series**  
Non Magnetic, Double Acting



**TND Series**  
Twin Rod, Magnetic



**CXS Series**  
Magnetic



DA = Double Acting | NM = Non Magnetic | SS = Stainless Steel

MHZ2 / MHZL2  
Pneumatic Finger



MHC2  
Pneumatic Finger



MHQ2 / MHY2  
180° Deg Opening, Pneumatic Finger



MHS  
Pneumatic Gripper, Parallel Open/Close



HFY  
Pneumatic Gripper, Airtac Type



MHT2  
Pneumatic Gripper



MGJ  
Cylinder With Guide Rod



JGL  
Lever Cylinder



MGMP Z  
Thin Guide Rod



## Cylinder Accessories

Fork / Y + Pin



Eye Rod



Float



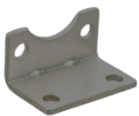
Rod Eye



Reed Switch



Mounting LB



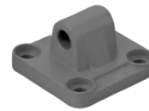
Mounting FA



Mounting CB



Mounting CA



Mounting TC



# Pneumatic Air Guns and Tools

Plastic Body  
Regular



Plastic Body  
Long Nozzle



Plastic Body  
Heavy



Metal Body  
Regular



Metal Body  
Small



Metal Body  
Heavy



Impact Wrench



Impact Wrench – Anvil



Die Grinder



Ratchet Wrench



Air Nailer



Angle Die Grinder



Air Hydraulic Rivetter



Air Screw Driver



Air Palm Sander



Caulking Gun



Plaster Spray Gun



Electric Spray Gun



Air Brush Gun



Oil Spray Gun



Sand Blasting Gun



Texture Gun



HVLP Spray Gun



Spray Gun - Gravity



Grease Gun



Foundry Gun



Spray Gun - Suction



## Hydraulic Jacks

TJ Series (Single Piston)



ATJ Series (Double Piston)



Gear Box Jack



Single Piston

Double Piston

Gear Box

2 Ton    5 Ton    20 Ton

3 Ton

20mm

2.5 Ton    10 Ton    25 Ton

4 Ton

25mm

3 Ton    15 Ton    -



# Air Compressors

30 Ltr  
Air Compressor

50 Ltr  
Air Compressor

Air Compressor  
with Motor



Model Code	Tank Capacity (Litres)	Motor HP - Pistons
AC-03	36	0.5HP – 1 Piston
AC-05	60	1HP – 2 Piston
AC-05A	80	1HP – 2 Piston
AC-08	132	2HP – 2 Piston
AC-10	175	3HP – 2 Piston
AC-11	200	5HP – 2 Piston
AC-30C	30	2HP
AC-50C	50	2HP

# Grease Dispensers

Pneumatic Operated

Hand Operated



Size in Kg With R2 Hose 2 mtr			
5	15	25*	205*
10	20	50*	-
*with Cover, Casting Plate (Gun included in 205kg)			

Size in Kg With R2 Hose 2 mtr	
3	15
5	20
10	-

# Garage Accessories

Car Washing Gun/Nozzle



Car Washing Gun



High Pressure Washing Gun



Foam Gun



Sockets for Impact Wrench



High Pressure Pump



Labour Saivng Machine



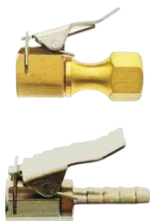
SS Foam Tank



Foot Pump



Air Lock Nozzle



Air Chucks



Pressure Gauge for Tyres



Twin Tyre Connector



Air Controller



2 and 3 Way Air Controller



# Industrial Vibrators

Ball Vibrator Findeva Type



K Series

8	16	30
10	20	36
13	25	-

Turbine Vibrator Findeva Type



GT Series

8	13	20	30	40
10	16	25	36	48

Turbine Vibrator Findeva Type



SK Series

30	60
40	80

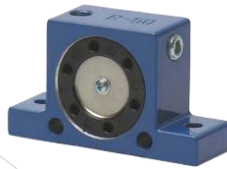
Vibrator Findeva Type



NTP Series

25	32	48
----	----	----

Roller Vibrator Findeva Type



R Series

50	65	80	100
----	----	----	-----

Vibrator Findeva Type



BVP Series

30C	40C	60C
-----	-----	-----

# Industrial Shock Absorbers

AC Series



ACD Series



AD Series



YSR Series (Festo Type)



HR(SR)



RBC (SMC Type)



## Brands We Deal In



# NISHA SALES

Wholesaler House of Industrial Requisites

Office: 1045, Ravivar Peth , Shop No. 5 Vishwashanti Apartments, Pune, Maharashtra  
Mobile: 9325299077 | Landline: 020-24458444 | Email: nishasales@gmail.com